



Instinct Guides You



Ferndale Road, Weymouth, Dorset DT4 7QZ Offers In Excess Of £220,000

- Three Bedrooms
- Lodmoor
- Modern Kitchen/ Diner
- Courtyard Garden
- Beautifully Presented Throughout
- Close To Shops & Amenities
- Close To Schools
- Downstairs Cloakroom
- Transport Links Nearby
- Modern Bathroom



Registration No. 08079158 Directors Mr Wilson, Mr Tominey

Courtesy Notice Upon using WilsonTominey as selling agents ensure we are made aware of contractual obligations you may be under. We can then proceed accordingly.

WilsonTominey Ltd
15 Westham Rd.
DT4 8NS

T 01305 775500
E sales@wilsontominey.co.uk
W www.wilsontominey.co.uk



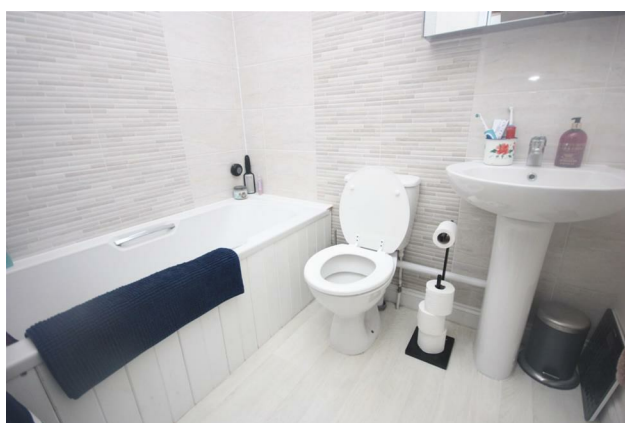
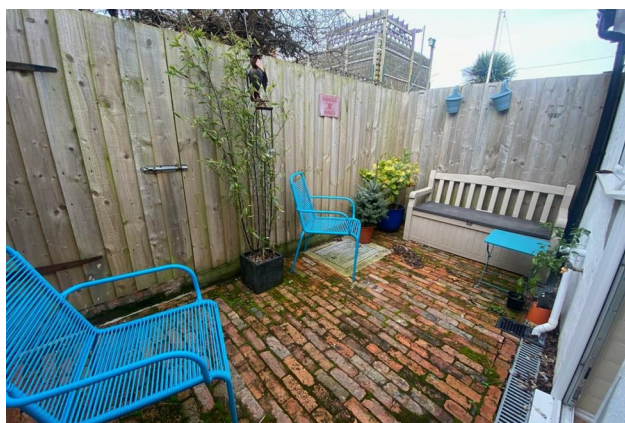
A BEAUTIFULLY PRESENTED, three bedroom period house, situated in Lodmoor, approximately ½ mile Weymouth Beach & Town Centre. A variety of shops and amenities are positioned nearby including a mini supermarket, takeaways, Primary/ Secondary Schools and a bus route providing transport links into Weymouth & Dorchester Town's.

A composite door leads into an open hallway with space for coats and access into the living area. The living area has a warm and cosy feel with ample space for furniture. Proceeding to the rear of the property a doorway leads into the kitchen/ diner, an excellent space for dining, entertaining and cooking. The kitchen is modern and comprises a range of fitted units, with built in oven and dishwasher, plus space for a fridge freezer. From the dining area is access into a cloakroom with WC and wash hand basin as well as a utility space housing a combi boiler and space for a washing machine.

Ascending to the first floor, a skylight gives the landing space a light and airy feel with access into the bedrooms and bathroom. The main bedroom spans the width of the property and boasts a bay window, perfect for a dressing table and full length built in wardrobes. The second and third bedrooms are adequate single rooms, positioned at the rear, enjoying a South Westerly aspect.

Completing the first floor is a well-appointed, modern bathroom suite comprising a panelled bath with shower over, close coupled WC, wash hand basin heated towel rail and complimentary tiled walls.

Outside to the rear is a courtyard garden, perfect to sit and enjoy a coffee or glass of wine whilst catching the afternoon sun.



Room Dimensions

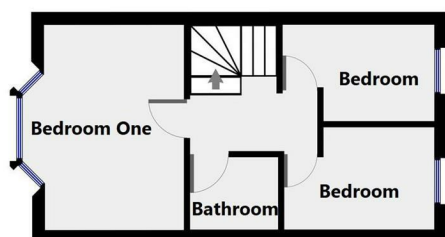
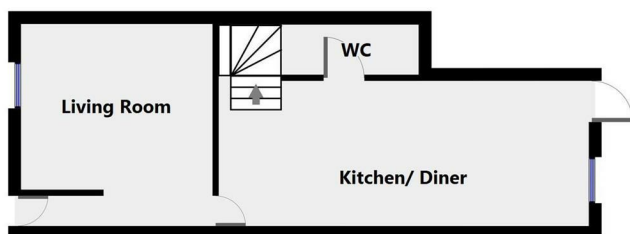
Living Room 12'11 x 12'3 (3.94m x 3.73m)

Kitchen/ Diner 23'8 x 9'3 (7.21m x 2.82m)

Bedroom One 13'1 x 8'8 (3.99m x 2.64m)

Bedroom Two 10'2 x 6'10 (3.10m x 2.08m)

Bedroom Three 10'2 x 6'2 max (3.10m x 1.88m max)



Energy Efficiency Rating		Current	Potential
Very energy efficient - lower running costs			
(92 plus) A			80
(81-91) B			
(69-80) C			
(55-68) D		62	
(39-54) E			
(21-38) F			
(1-20) G			
Not energy efficient - higher running costs			
England & Wales		EU Directive 2002/91/EC	

Environmental Impact (CO ₂) Rating		Current	Potential
Very environmentally friendly - lower CO ₂ emissions			
(92 plus) A			
(81-91) B			
(69-80) C			
(55-68) D			
(39-54) E			
(21-38) F			
(1-20) G			
Not environmentally friendly - higher CO ₂ emissions			
England & Wales		EU Directive 2002/91/EC	

Important Notice: Particulars are prepared for marketing purposes only and should not be treated as a statement of the condition of any building, fixture or appliance. All measurements, floor plans and lease/ maintenance are approximate and not to be relied upon. Purchasers should make their own checks before relying on any of the information provided herein. * For double glazing and gas radiator heating, it is where specified.